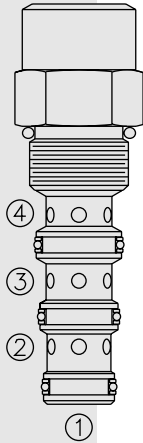


EC10-43 Pressure Compensator



DESCRIPTION

A screw-in, cartridge-style, **priority-on-demand**, pressure-compensator with a dynamic load sense, intended to provide priority flow in the required amount, while allowing excess flow to be used for auxiliary functions.

OPERATION

With inlet flow at ③, the **EC10-43** will deliver required priority flow at ④, regardless of load pressure. Excess flow exits at ②. Port ① is the load sense port. All ports may be fully pressurized.

FEATURES

- Hardened parts for long life.
- Quiet, modulated response.
- Industry common cavity.

RATINGS

Operating Pressure: Inlet: 240 bar (3500 psi)

Maximum Regulated Flow: 34.1 lpm (9 gpm) with 10.3 bar (150 psi) compensator spring; 26.0 lpm (7.0 gpm) with 5.5 bar (80 psi) compensator spring

Flow Maintenance: see performance chart

Temperature: -40 to 120°C with Buna N seals

Filtration: See page 9.010.1

Fluids: Mineral-based or synthetics with lubricating properties at viscosities of 7.4 to 420 cSt (50 to 2000 ssu)

Installation: No restrictions; See page 9.020.1

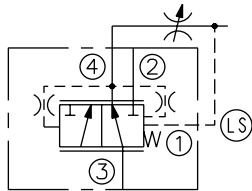
Cavity: VC10-4; See page 9.110.1

Cavity Tool: CT10-4-XXX; See page 8.600.1

Seal Kit: SK10-4X-MMM; See page 8.650.1

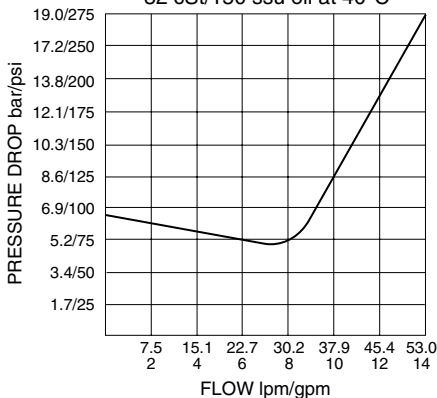
SYMBOLS

USASI/ISO:



PERFORMANCE (Cartridge Only)

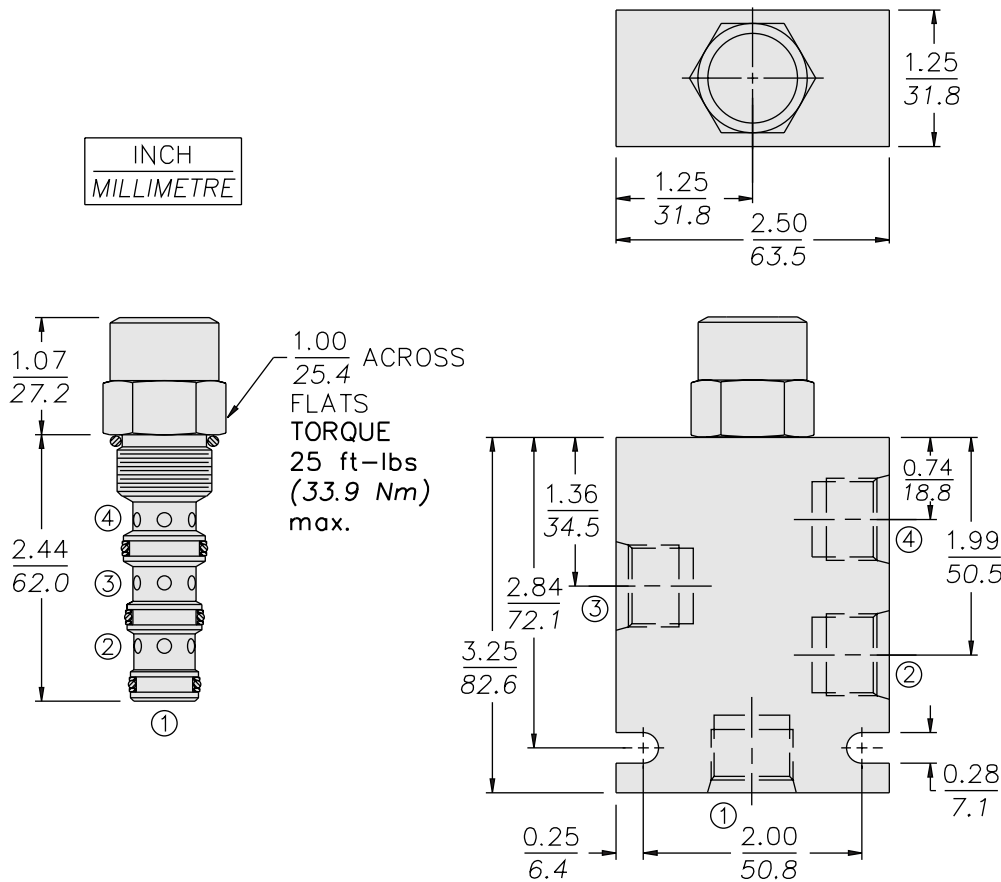
Pressure Drop vs. Inlet Flow
 ③ to ②, with ④ closed;
 No load at ②; 150 psi Spring
 32 cSt/150 ssu oil at 40°C



with Dynamic Load Sense

EC10-43

DIMENSIONS



MATERIALS

Cartridge: Weight: 0.16 kg. (0.35 lbs.);
Steel with hardened work surfaces.
Zinc-plated exposed surfaces.
Buna N O-rings and polyester
elastomer back-ups standard.

Standard Ported Body: Weight:
0.34 kg. (0.75 lbs.); Anodized high-
strength 6061 T6 aluminum alloy,
rated to 240 bar (3500 psi); see page
8.010.1. Ductile iron and steel bodies
available; consult factory.

TO ORDER

EC10-43 -		Compensator Spring	
Porting		80	5.5 bar (80 psid)
Cartridge Only	0	150	10.3 bar (150 psid)
SAE 6	6T		
SAE 8	8T		
1/4 in. BSP*	2B		
3/8 in. BSP*	3B		
		Seals	
		N	Buna N (Std.)
		V	Fluorocarbon

*BSP Body;
U.K. Mfr. Only